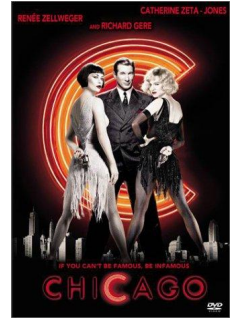


Songs from Musicals

Name _____ Form _____



Read the following paragraphs and fill in the missing words, choosing from those in the box below and thinking about the musical “Chicago”.

Musicals are pop versions of _____. They are performed on _____ or film. There is a fair bit of _____ and _____, but a lot of the story is told through _____. The orchestra or _____ accompanies the singing and plays _____ music. Musicals are generally written in the style of the _____ music that’s around at the time they’re written. Musicals were invented in the _____ in the early _____ century. Back then they were called musical plays or musical _____.

There are four basic types of Musical song:

Solo _____ song – a character sings about how they’re feeling – in love, full of hate, over the moon with happiness, etc. An example of a solo song from the musical “Chicago” is _____.

Duet – duets are basically the same as solo character songs, except there are _____ people singing so you get different reactions to a situation. An example of a duet song from the musical “Chicago” is _____.

Action song – the words of the song tell you what’s going on in the _____ – they lead you into the next bit of the story. An example of an action song from the musical “Chicago” is _____.

Chorus number – the _____ get together & have a big sing-song. An example of a chorus number from the musical “Chicago” is _____.

All these styles of song developed from opera – solo songs are like _____ and action songs are like _____. The lyrics in a musical song tell part of the _____. They’re usually written first – the composer has to fit the music around them.

| | | | | | |
|---------------|----------------------------|-------------------|-----------------|-----------|------------|
| plot | character | incidental | USA | talking | arias |
| singing | cast | popular | two | stage | recitative |
| opera | comedies | band | dancing | twentieth | story |
| “Funny Honey” | “When you’re good to Mama” | “Cellblock Tango” | “All That Jazz” | | |