

A photograph of Harry Beck, the designer of the London Underground roundel. He is an older man with glasses and a mustache, wearing a dark suit and tie. He is smiling and looking upwards and to the right. He is holding a small, folded paper map of the London Underground in his hands. The background is a large wall covered with a complex network of lines and text, which is a detailed version of the London Underground map. The overall tone of the image is historical and professional.

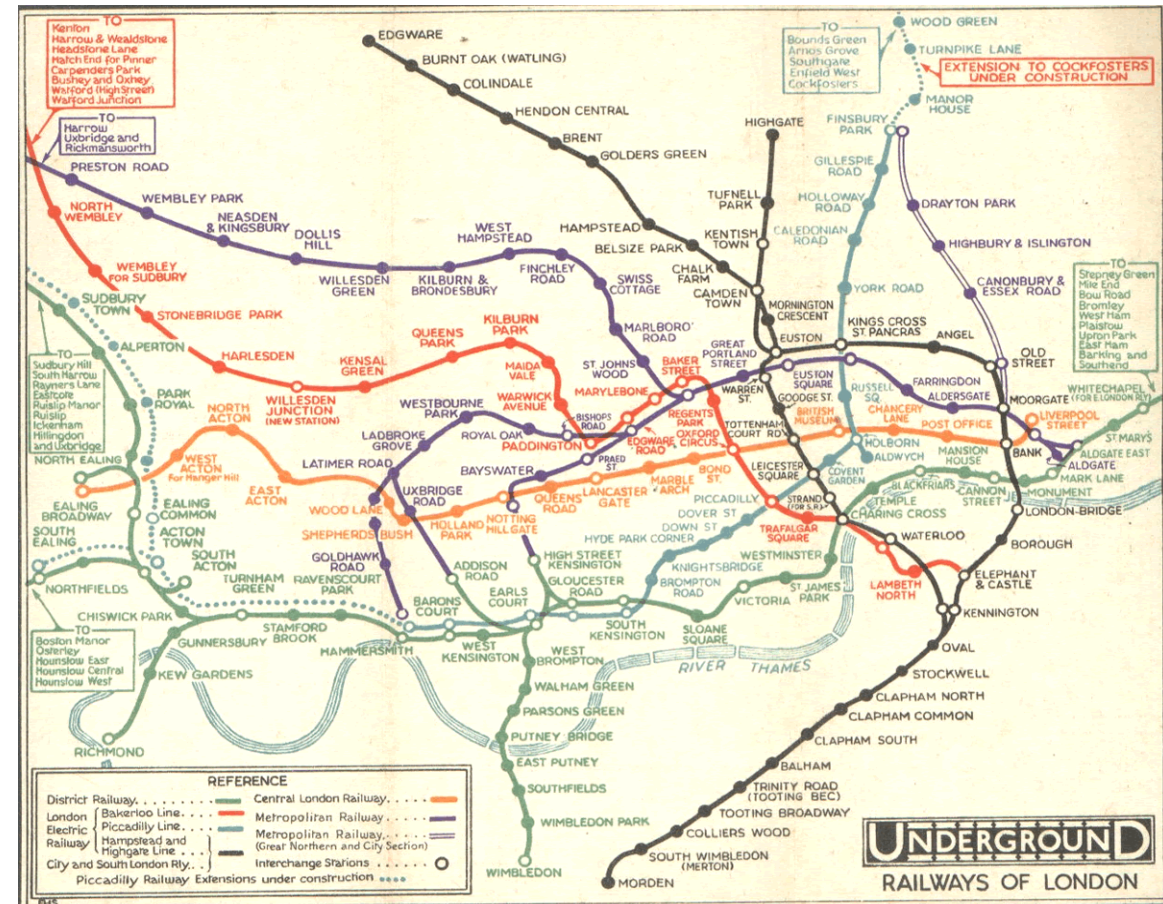
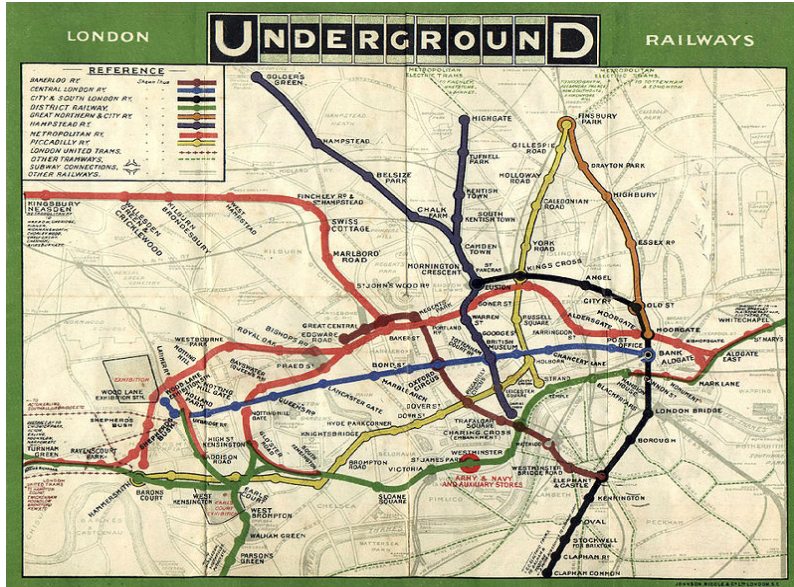
# Harry Beck

By Leon Lima

# Who was Harry Beck?

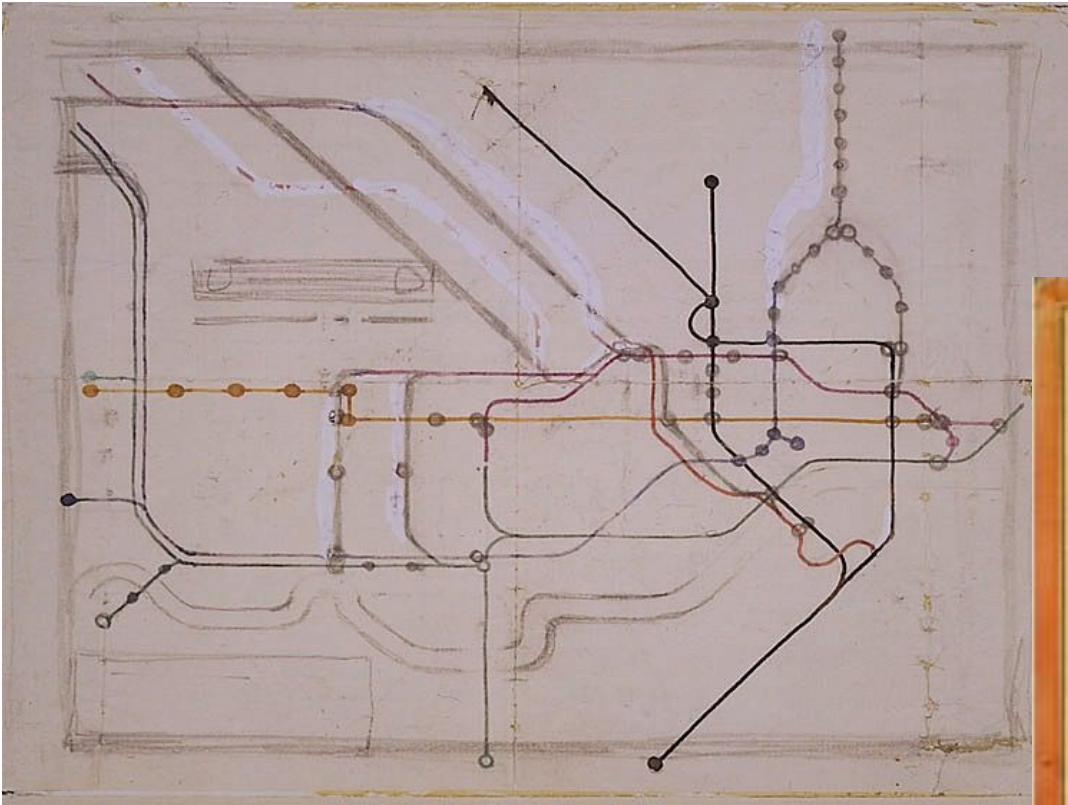
- Henry Charles Beck was born on 4 June 1902 in Leyton, London
- He worked mainly as technical draughtsman, drawing schematics for electrical systems.
- He is most well known for creating a map of the London Underground in 1933.
- Interestingly, he developed the design in his own free-time, while he was unemployed. His idea was very innovative and unusual.

As the number of underground lines was increasing, old-style maps became very crowded and confusing



*“Looking at an old map of the Underground railways, it occurred to me that it might be possible to tidy it up by straightening the lines, experimenting with diagonals and evening out the distance between stations.” (Harry Beck)*

His design idea was based on an electrical wiring diagram.



Stations were placed at equal distances from one another and interchange stations were highlighted. However, the design was at first rejected because it did not show the real distances between stations.

The map simplified the layout of the lines enlarging the central area in relation to the outlying districts and using only vertical, horizontal and 45 degree diagonal lines.



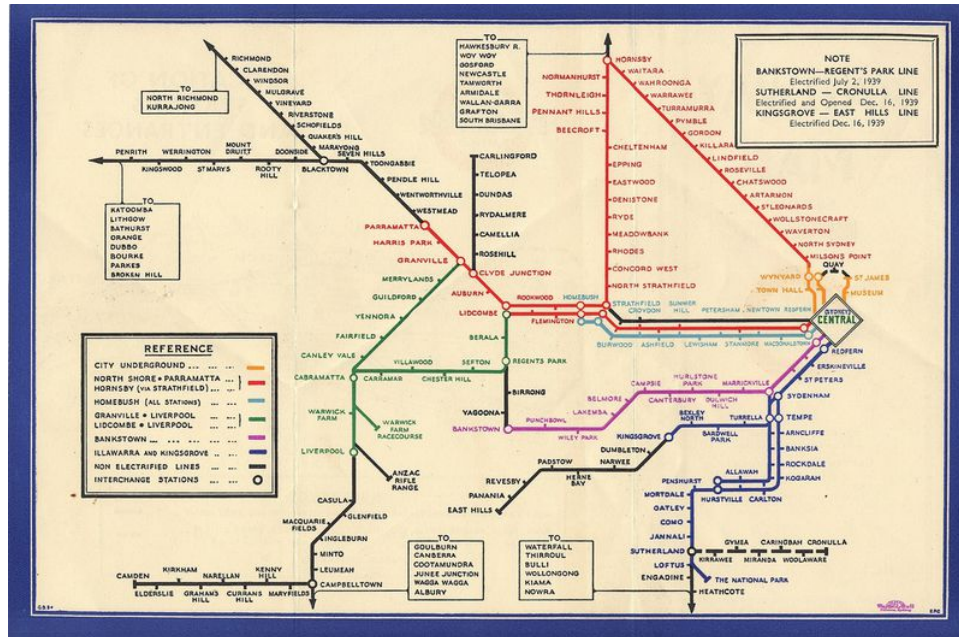
Beck submitted a revised design in 1933 which was accepted and quickly became very popular with commuters.



"Beck's map was revolutionary in its simplicity," said Sam Mullins, director of the London Transport Museum.

Because of its simplicity and clarity, the map became the basis for all future London Underground maps.

It also inspired similar designs in other parts of the world, e.g. in Sydney.



Sydney Metro map 1939 © London Transport Museum

Beck also produced some railway maps and a diagram for the Paris Métro:



Unfortunately, Harry Beck did not receive proper recognition for his contributions until after his death in 1974.



Harry Beck Memorial plaque at Finchley Central Underground station

However, he was posthumously rewarded with an English Heritage Blue Plaque — a prestigious honour celebrating the 80th anniversary of his original map.

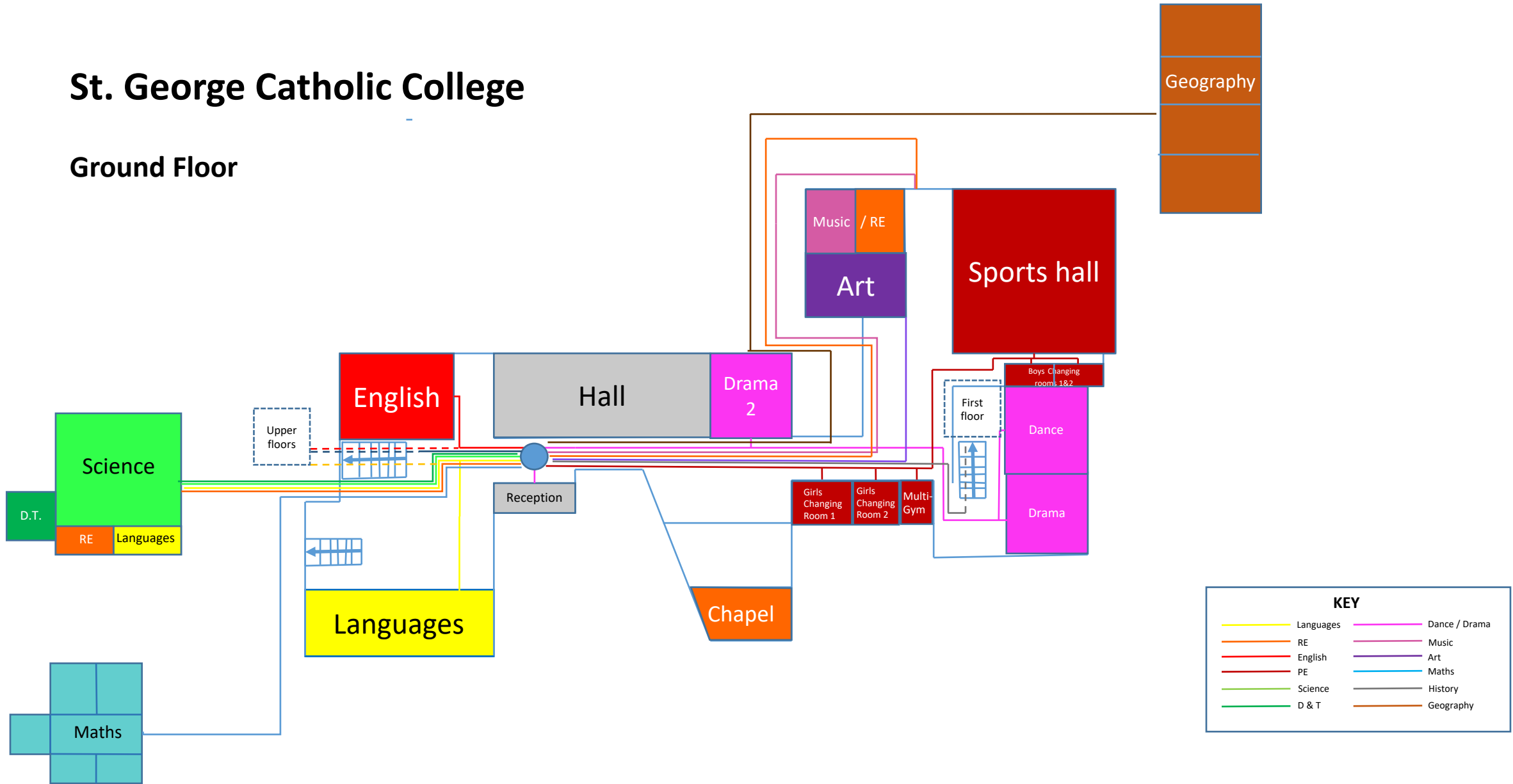
How has Harry Beck made a difference to the lives of people who use his designs?

- Harry Beck's map was a lot clearer and simpler than traditional geographic maps.
- The new map made it much easier for people to travel around London, to plan their route and to change stations.
- It may have encouraged more people to travel from the suburbs to the city centre because it seemed closer and less complicated.



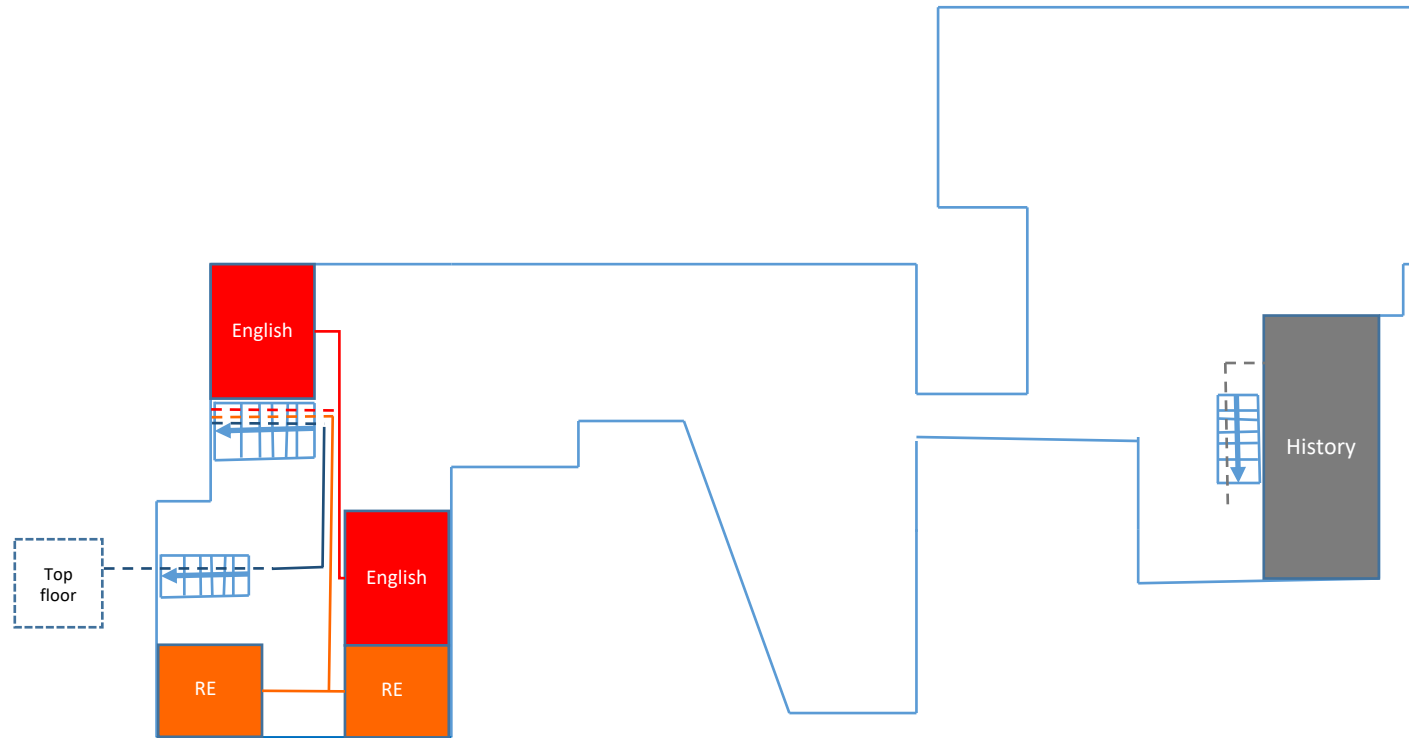
# St. George Catholic College

## Ground Floor



# St. George Catholic College

## First Floor



KEY	
— Languages	— Dance / Drama
— RE	— Music
— English	— Art
— PE	— Maths
— Science	— History
— D & T	— Geography



# St. George Catholic College

## Schematic of Ground Floor

